

977CM Current Monitoring Pulsed DC Controller



Product Code: 977CM

The 977CM - Current Monitoring Pulsed DC Controller, brings together powerful long-range ionisation; closed-loop feedback; self-monitoring and remote reporting. A complete package, unique to Meech. Self-monitoring and adjustment of performance allows optimum control of static for much longer periods than previously possible. Local display and output signals alert operators to the need to clean the equipment.

Features

Benefits

Ion current monitoring and control	Maintains optimum performance for longer periods, by increasing Voltage to 125% of start voltage (i.e 12kV g 15kV)
20/80 to 80/20 balance adjustment	Charges of either polarity neutralised equally well.
LCD display	Clear indication of real time performance and system settings
Customer adjustable alarm setting	The need for maintenance is clearly signalled before quality issues arise.
Integral feedback	Simplifies and reduces overall cost of "Closed Loop" feedback installation.
Internal switchmode power supply	Accommodates all standard AC supplies worldwide.
Remote on/off	Allows simple interlocking with the machine's running state
Software Lock out	Prevents unauthorised adjustment
Analogue Outputs	Easy remote logging of performance and residual balance.

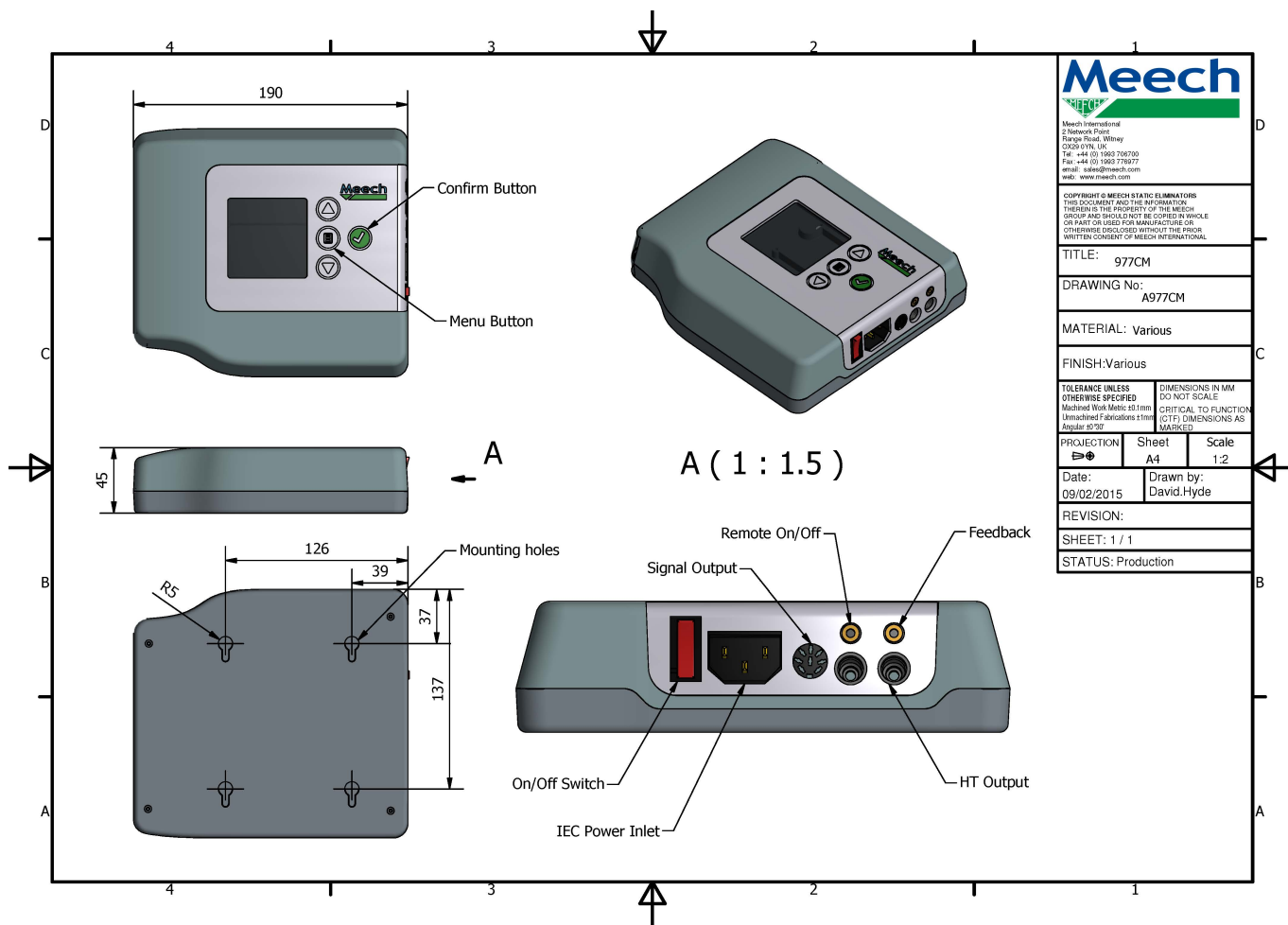
Technical Characteristics

Input connection:	IEC Socket C13
Input voltage:	100 V - 250 V AC
Input current:	40 mA maximum
Input frequency:	45 - 65 Hz
Dimensions (W x H x D):	190mm x 170mm x 45mm
Weight	600 g
Enclosure:	ABS; fire retardant - UL94: V0
Maximum Temperature (LCD):	45°C
Output voltage:	up to 15kV
Output frequency:	1Hz - 20Hz
Output balance:	20/80 to 80/20 Positive/Negative

Product shown in this document may be covered by one or more patents, patents applied for and/or registered designs and/or trade marks. For further information please refer to our Head Office or visit www.meech.com.

Product Data Sheet

Published Date: 09.02.2015



<p>Meech International 3 Network Point Range Road, Wilsey QX29 0YN, UK Tel: +44 (0) 1969 706700 Fax: +44 (0) 1969 778977 email: sales@meech.com web: www.meech.com</p>		
COPYRIGHT © MEECH STATIC ELIMINATORS THIS DOCUMENT AND THE INFORMATION THEREIN IS THE PROPERTY OF THE MEECH GROUP AND SHOULD NOT BE COPIED, WHOLE OR PART OR USED FOR MANUFACTURE OR OTHERWISE DISCLOSED WITHOUT THE PRIOR WRITTEN CONSENT OF MEECH INTERNATIONAL.		
TITLE: 977CM		
DRAWING No: A977CM		
MATERIAL: Various		
FINISH: Various		
TOLERANCE UNLESS OTHERWISE SPECIFIED DIMENSIONS IN MM DO NOT SCALE Machined Work Metric ±0.1mm Unmachined Fabrications ±1mm Angular ±0.2° CRITICAL TO FUNCTION (CTF) DIMENSIONS AS MARKED		
PROJECTION	Sheet	Scale
1st Angle	A4	1:2
Date:	Drawn by:	
09/02/2015	David.Hyde	
REVISION:		
SHEET: 1 / 1		
STATUS: Production		

Product shown in this document may be covered by one or more patents, patents applied for and/or registered designs and/or trade marks. For further information please refer to our Head Office or visit www.meech.com.

Meech International

UK: +44 1993 706 700
 Hungary: +36 1 7977039

US: +1 330 564 2000
 China: +86 400 820 0102

Belgium: +32 (0)80 670 204
 India: +91 20-26159641

email: sales@meech.com
 web: www.meech.com

