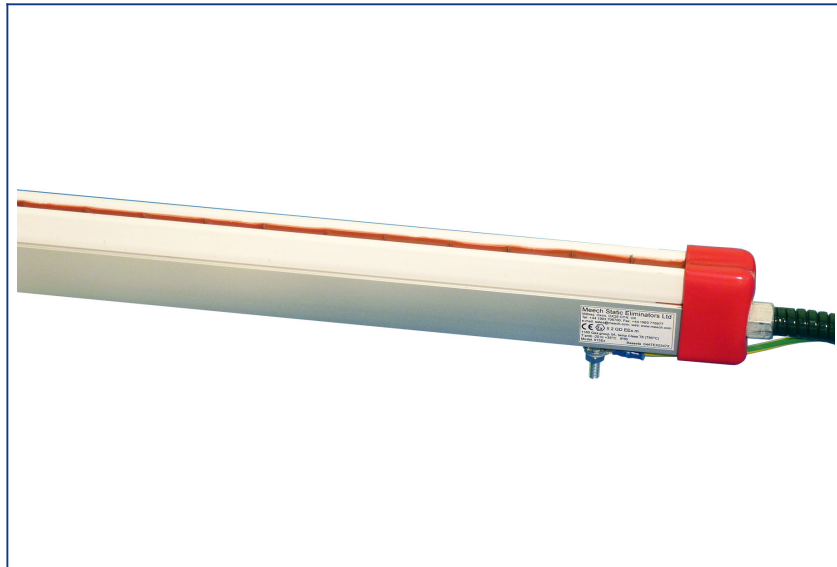


915EX Hazardous Area AC Bar



Product Code: 915EX

The Meech Model 915Ex has been designed to extend the exceptional performance and other benefits of the 915 AC system to classified hazardous environments. It is particularly suited to coating, laminating, finishing and gravure printing applications.

The 915Ex is certified by Baseefa to comply with Article 9 of the Council Directive 94/9/EC (ATEX). EC Type Examination Certificate No: Baseefa04ATEX0347X II 2 GD EEx m Gas Group IIA. Temp Class T6 (T85°C) T amb -20 to +35 Deg C. (IP65)

Features

Benefits

Powerful, intense ion production	Very fast decay times and effective at faster web speeds
Effective at distances up to 150mm	Flexibility in positioning
Slim profile	Can be installed in restricted places
Resistively coupled emitter pins	Shockless, thereby enhancing operator safety
Sharp titanium emitter pins	Reduced pin contamination & longer effective life
Easy wipe casing	Easy maintenance, sustained performance and reduced machine downtimes
"T" channel mounting system	Simple & quick installation

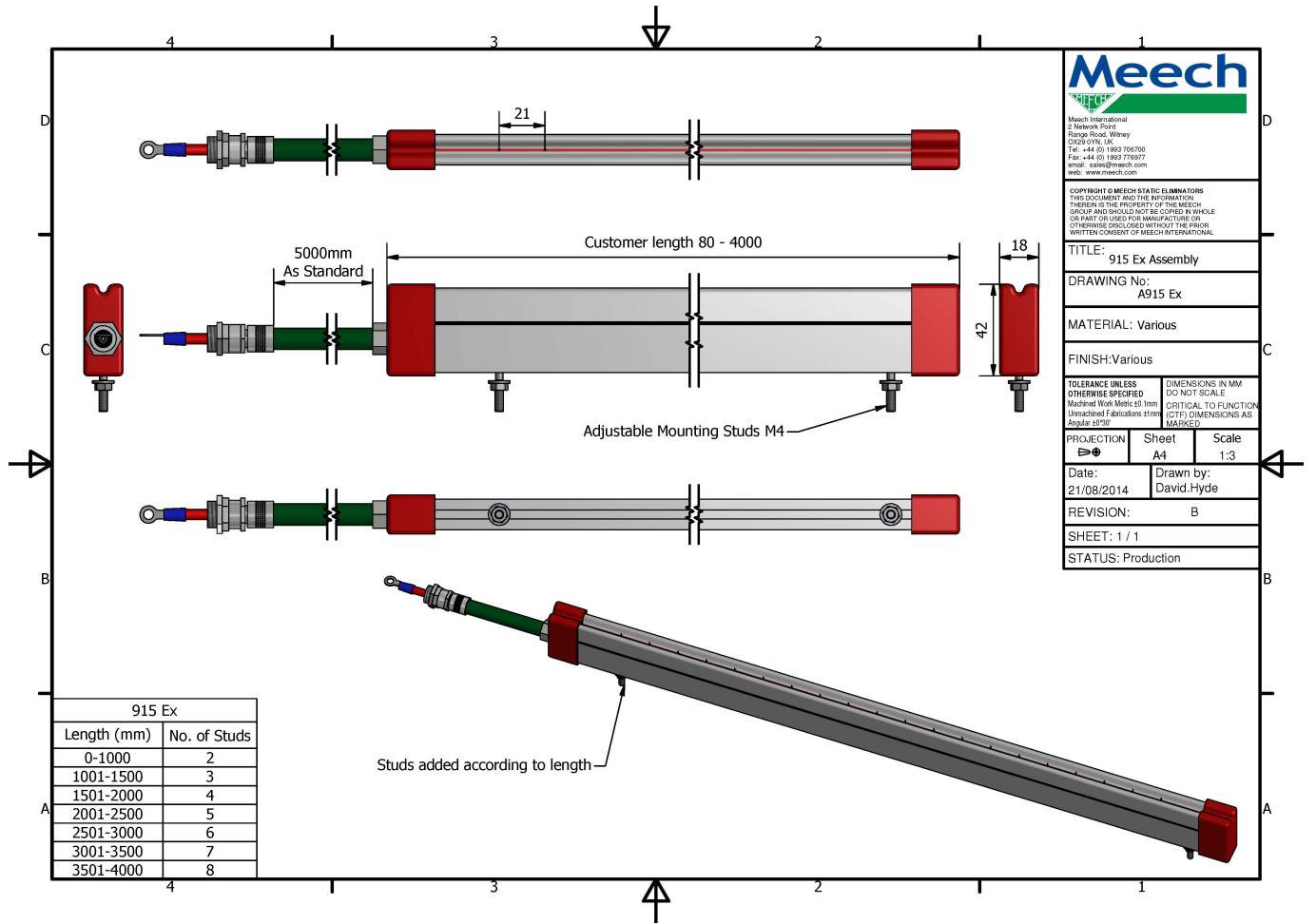
Technical Characteristics

Dimensions	18mm x 42mm x length (up to 4000mm)
Weight	Approx 1.1 kgs per 1000mm length
Operating voltage	4.5-7.0 kV
Cable	5 metres shielded in flexible conduit; longer lengths can be ordered
Construction	Anodised aluminium and fire retardant PVC extrusion
Emitters	Titanium
Mounting	M4 x 20mm studs into "T" slots
Operating current	Less than 5 mA

Product shown in this document may be covered by one or more patents, patents applied for and/or registered designs and/or trade marks. For further information please refer to our Head Office or visit www.meech.com.

Product Data Sheet

Published Date: 21.11.2013



Meech
Meech International
2 Network Point
Range Road, Wilsey
OX28 9YB, UK
Tel: +44 (0) 1893 706700
Fax: +44 (0) 1893 776977
email: sales@meech.com
web: www.meech.com

COPYRIGHT © MEECH STATIC ELIMINATORS
THIS DOCUMENT AND THE INFORMATION
THEREIN IS THE PROPERTY OF THE MEECH
GROUP AND SHOULD NOT BE COPIED IN WHOLE
OR PART OR USED FOR MANUFACTURE OR
OTHERWISE DISCLOSED WITHOUT THE PRIOR
WRITTEN CONSENT OF MEECH INTERNATIONAL.

TITLE: 915 Ex Assembly
DRAWING No.: A915 Ex
MATERIAL: Various
FINISH: Various

TOLERANCE UNLESS OTHERWISE SPECIFIED
Mechanical Work Metric: ±0.1mm
Unmachined Fabrications ±1mm
Angular: ±30° DIMENSIONS IN MM
DO NOT SCALE
CRITICAL TO FUNCTION
DIMENSIONS AS MARKED

PROJECTION: Sheet **Scale:** 1:3

Date: 21/08/2014 **Drawn by:** David Hyde

REVISION: B

SHEET: 1 / 1

STATUS: Production

Product shown in this document may be covered by one or more patents, patents applied for and/or registered designs and/or trade marks. For further information please refer to our Head Office or visit www.meech.com.

Meech International

UK: +44 1993 706 700
Hungary: +36 1 7977039

US: +1 330 564 2000
China: +86 400 820 0102

Belgium: +32 (0)80 670 204
India: +91 20-26159641

email: sales@meech.com
web: www.meech.com

