

904 Power Supply



Product Code: 904

The Meech Model 904 is a constant voltage AC power supply, designed to provide a 7kV source for Meech AC ionising equipment. It is adjustable to operate at 100-120v or 200-240v input voltages and is available in either 50Hz and 60Hz versions to suit local conditions.

The 904 utilises a modified shape of output wave form for powerful static neutralisation and is uniquely designed to allow automated manufacture for increased reliability and extended product life. The 904 incorporates a low voltage jack socket for connection of the Model 900vs2.

Features

Benefits

Automated manufacture on purposebuilt plant	Consistent, uniform winding gives more robust and stable performance
Modified output wave form	More powerful static neutralisation, lower electrical stress and increased reliability
Illuminated indicator for high voltage output	Confirmation that the system is operational. Can also assist in ionising system diagnosis
Connection ports for four ionising appliances and high load capacity	Several ionising appliances can be supplied by the same single power source
Short circuit current of <5mA	Ensures high level of operator safety
Mains voltage selector switch	Easy selection of appropriate mains voltage
IEC fused mains connector	Enables fast and easy connection to mains supply and reduced installation time
CUL and CE approved	Full conformance to international standards (UL, CSA, CENELEC & CE)

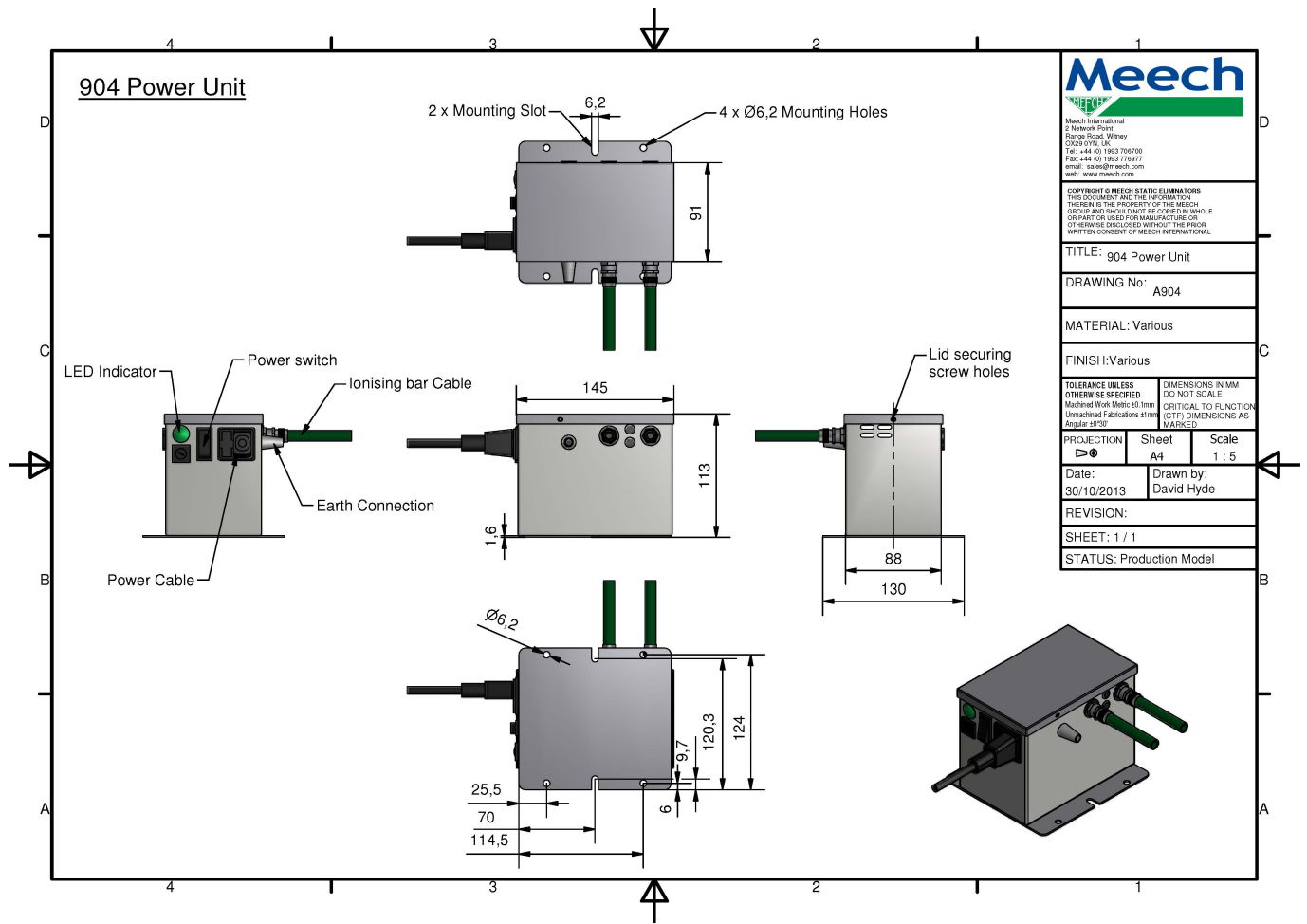
Technical Characteristics

Weight	3.4Kg
Input Voltage	110 or 240V AC
Input Frequency	50Hz (904-50) or 60Hz (904-60)
Maximum dimensions - case	113mm x 150mm x 90mm (h x w x d)
Maximum dimensions - mounting plate	150mm x 130mm (w x d)
Short circuit current	< 5mA
Maximum load	Equivalent to 12 metres of ionising appliances and cable
Output	7.0kV
Power consumption	140W
Certifications	CE, UL.

Product shown in this document may be covered by one or more patents, patents applied for and/or registered designs and/or trade marks. For further information please refer to our Head Office or visit www.meech.com.

Product Data Sheet

Published Date: 13.05.2016



Meech		
Meech International 2 Network Point Range Road, Wilsey O202 9PB, UK Tel: +44 (0) 1993 706700 Fax: +44 (0) 1993 776977 email: sales@meech.com web: www.meech.com		
COPYRIGHT © MEECH STATIC ELIMINATORS THIS DOCUMENT AND THE INFORMATION THEREIN IS THE PROPERTY OF THE MEECH GROUP AND SHOULD NOT BE COPIED BY WHOLE OR PART OR USED FOR MANUFACTURE OR OTHERWISE DISCLOSED WITHOUT THE PRIOR WRITTEN CONSENT OF MEECH INTERNATIONAL.		
TITLE: 904 Power Unit		
DRAWING No: A904		
MATERIAL: Various		
FINISH: Various		
TOLERANCE UNLESS OTHERWISE SPECIFIED Mechanical Work Metric: ±0.1mm Unmachined Fabrications ±1mm Angular: ±30°		
DIMENSIONS IN MM DO NOT SCALE CRITICAL TO FUNCTION DIMENSIONS AS MARKED		
PROJECTION	Sheet	Scale
1st Angle	A4	1 : 5
Date:	Drawn by:	
30/10/2013	David Hyde	
REVISION:		
SHEET: 1 / 1		
STATUS: Production Model		

Product shown in this document may be covered by one or more patents, patents applied for and/or registered designs and/or trade marks. For further information please refer to our Head Office or visit www.meech.com.

Meech International

UK: +44 1993 706 700
Hungary: +36 1 7977039

US: +1 330 564 2000
China: +86 400 820 0102

Belgium: +32 (0)80 670 204
India: +91 20-26159641

email: sales@meech.com
web: www.meech.com

